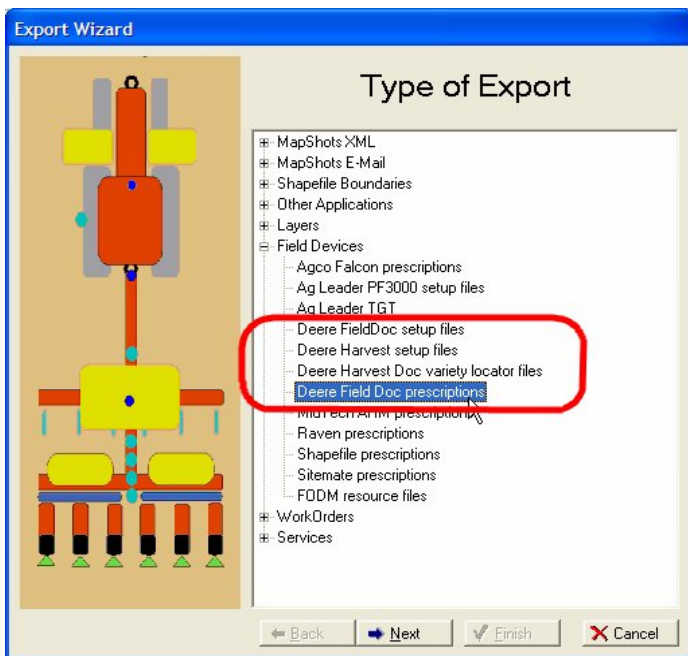
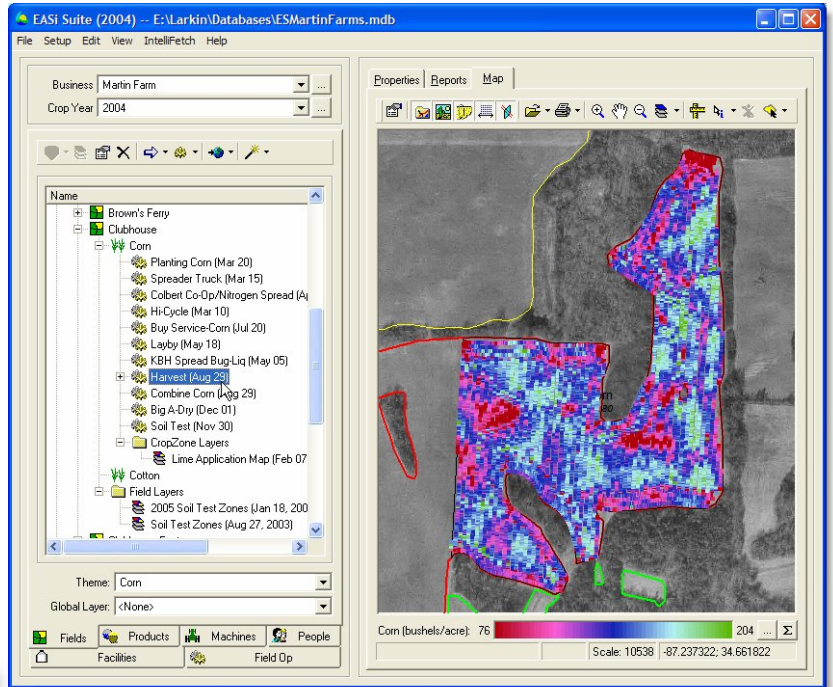




EASi Suite - GreenStar Features

EASi Suite is a full featured crop recordkeeping and Precision Ag solution that works with most any brand of field hardware. However, EASi Suite has some special features that have been added specifically to take advantage of the powerful John Deere GreenStar hardware:

- Imports JDOffice or Apex farm/field setup and boundary maps.
- Reads data directly from GreenStar cards, without using JDOffice or Apex.
- Memorizes cross references to JDOffice/Apex setup information.
- Provides cropzone support within the GreenStar farm/field structure.
- Automatically post calibrates yield maps with scale tickets.
- Writes GreenStar setup cards directly from within EASi Suite.
- Writes FieldDoc prescriptions and Variety Locator files from within EASi Suite.



EASi Suite has several other features that are appreciated by GreenStar users:

- Full support for background aerial imagery.
- Multi-layer support, with a set of editors for creating region, line, and site layers.
- Optional support for automatic soil test lab import.
- An unlimited number of prescription layers.
- Support for complex landlord leases and product splits.
- A complete grain inventory management system.
- Powerful planning and budgeting tools.
- True VRA based profit mapping.



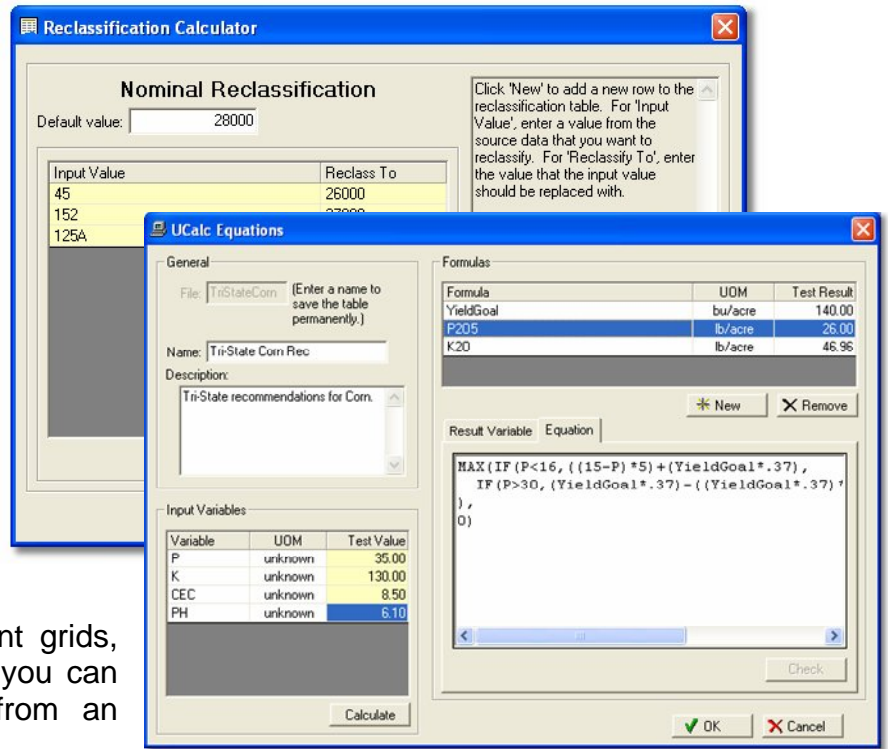
MapShots

Data Management Solutions for Agriculture

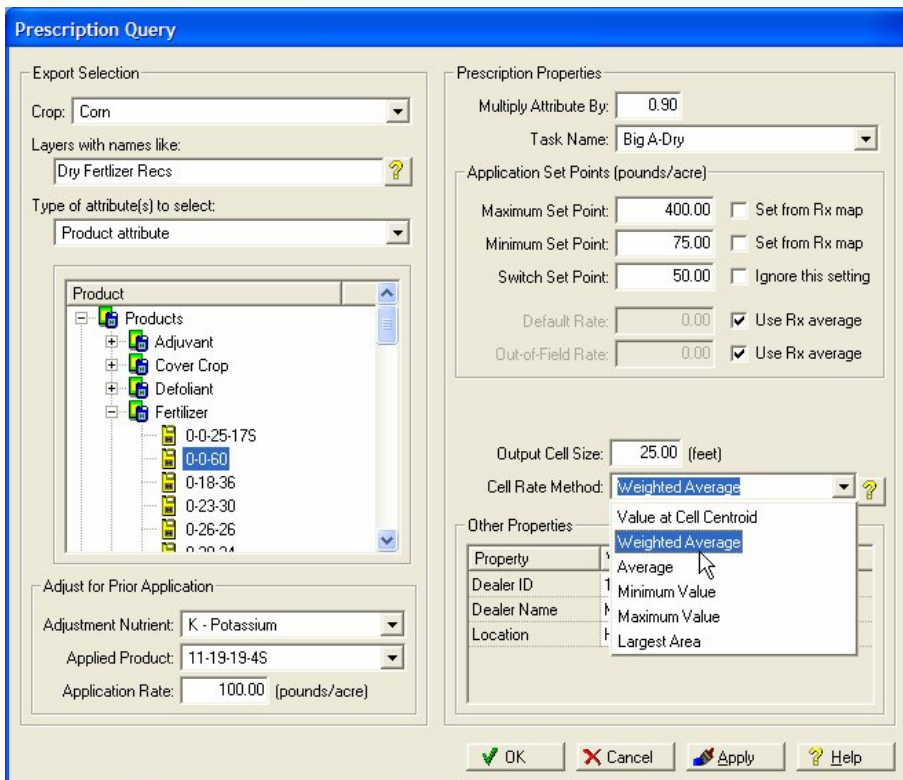
4610 Ansley Lane
 Cumming, GA 30040
 Phone: 678-513-6093
www.mapshots.com

Creating Prescriptions with IntelliCalc:

- A powerful wizard user interface to help you build complex calculations and perform intense analysis.
- Merging an unlimited number of map layers into a single calculation.
- A built in tool for reclassifying text or numeric map attributes into other text or numeric values. Numeric values can be reclassified using interpolation.
- A built in tool for creating Excel-compatible formulas.
- Performing algebraic and conditional operations on map layers
- A surfacing engine that supports point grids, cell grids, and clipped cell grids. Or you can supply your own spatial template from an existing layer.



Exporting Prescriptions with Bulk Rx:



- Transform nutrient, generic, and product recommendations into specific products.
- Adjust nutrient or product recommendations for nutrients supplied from a prior application.
- Scale recommendations to reflect last minute budget or weather constraints.
- Optionally set a maximum application rate.
- Optionally set a minimum application rate.
- Define the rate at which the application is switched from the minimum rate to zero.
- Export all recommendations for a grower or farm at one time.



MapShots

Data Management Solutions for Agriculture

4610 Ansley Lane
 Cumming, GA 30040
 Phone: 678-513-6093
 www.mapshots.com